



**Best of Show Winner
and First Place Winner in Oils/Acrylics
" Bearfoot" by Chong-Sun Oh.**



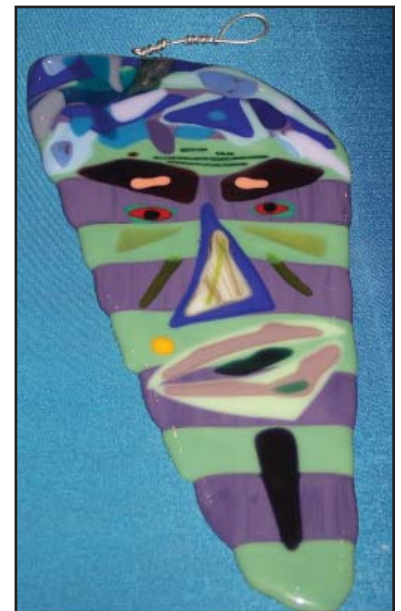
**Sculpture First Place Winner
"X-Pert" by B.A. D'Alessandro.**



**Pastel winner" Little Ballerina"
by Kitty Fabrico.**



**Graphics Winner "To the Left"
by Emily Zocchi.**



**Gina Kingsley's piece took First
Place in Crafts.
It's entitled "Trouble".**

**Regretfully, no photo
was available for
Mixed Media winner
Louise Stern's piece,
"Energy".**



**Digital Art/Photography Winner
"Foggy Day" by Bob Miranti.**

MEMBER NEWS

Lorie Gurian won 1st Place in Watercolor at the Scarsdale Art Association 70th Annual Awards Exhibit held in November. She also has a one-person show entitled "Good Natured" at the Sheldrake Environmental Center in Larchmont running from Jan. 16-March 28th. The reception is Jan. 20th from 4-6pm.

Lisa Post exhibited two pieces in the Annual Christmas Exhibit at the Focal Point Gallery in City Island in the Bronx, which ran from December 7-31.

We extend our wishes for a speedy and complete recovery to **Joseph DelliCarpini** on his recent surgery.

Theresa Beyer, Tom LaPadula, Jesse Sanchez and **Charlotte Klein** also participated in this year's "First Night New Rochelle". Calendar booths were set up at the YMCA on Weyman Avenue and at the Library. They were interviewed and acknowledged by Bob Marone of WVOX. Jesse also participated at the opening ceremony of First Night where he helped cut the ribbon announcing the start of the city wide event and unveiled the painting he did for it. Local News 12 was there to cover the opening as well as the rest of the day's festivities. You can learn more about First Night 2008 at: <http://www.firstnightnewrochelle.org/>

A group shot of the artists attending the reception; Louise Stern, Lisa Post, Theresa Beyer, Roger Caruana, Jesse Sanchez, Chip Perone, Mayor Bramson holding the calendar, Tom LaPadula. Winnie Balzano, Sara Furlong, Elaine Freidman and Justine High-Price (Jeanie Ritter did not attend).

LETTER FROM OUR PRESIDENT

Dear members and friends,

I hope this winter season finds you well and that the holiday season brought you joy and peace. We had a very busy year in 2007. Our calendar continues to sell and I hope all of you will continue to get the word out. A PayPal account was created on our site for your convenience and calendars can now be ordered online at www.nraaonline.org

Coming up in 2008 are two special programs. I invited Beth S. Gersh-Nesic of the New York Arts Exchange to give a talk on marketing fine art. A specific date has not yet been set but keep a look out in the newsletter for it. This event will be co-sponsored by the New Rochelle Council on the Arts. Michael Torlen, our judge for the Juried Show, was very insightful and instructive and I would like to invite him back for a members critique sometime next year.

Some of you have contacted me and offered to volunteer for several of the everyday and necessary duties, such as phone calls, mailings, etc., and for that I am very grateful. With your help I am looking forward to another year of shows and sharing. Once again my thanks to the officers and board, and those of you who helped our exhibitions come together and made this a very fine year for the organization.

It has been said that "Hope is the ability to hear the music of the future." It is my hope that we continue to strive for excellence in our work and to be encouraging to one another in the process. I will see everyone at The Dermot Gale Show on April 5th.

Best wishes,

Jesse Sanchez, President

CALENDAR RECEPTION AT CITY HALL

On November 20th a reception was held at the rotunda in City Hall for the "New Rochelle 2008 Through The Eyes of Its Artists Calendar". The reception was attended by the artists featured in the calendar along with family and friends, Mayor Noam Bramson, City Council members, staff, and visitors. We also sold a good amount of calendars at the event. The original artwork will be on exhibit in the Mayor's office throughout the year.



This photo courtesy of Kathy Gilwit.

HOLIDAY PARTY

The Art Association held its annual holiday party on December 18th. There was great food and snacks, holiday music to enjoy, a grab bag, and our "Artist's Choice" fun awards presentation. Below are a couple of pictures from the party.



Some members enjoying the food and conversation.



Ivy Riekstins smiling after winning one of the Artist's Choice awards at the holiday party.

IMPORTANT REMINDERS

To help alleviate the problems we sometimes encounter at registration, please adhere to the following rules:

1. Work **MUST** be framed and wired with wire (no fishing line or filament).
2. Work **MUST** have clean mats and frames.
3. Glass **MUST** be clean with no fingerprints, old stickers or glue residue. It must be free of dust and oils so numbered stickers will adhere.
4. Work **MUST** be completely dry and ready to hang.
5. Freestanding large sculptures have to be stable. We cannot take the chance that it might topple over and cause an injury.
6. Make sure **ALL** receiving forms are completed before you reach the desk and are properly taped to the back of the artwork (except for September juried show which has its own prospectus).
7. Please be on time. If you are late, your work will **NOT** be accepted for that show. Our volunteers work very hard and need extra time to get the show hung.

GENERAL REMINDERS

Dues were to be paid in full on September 1, 2007. If you have not yet done so, please mail a check for \$40 to Theresa Beyer at the address on the bottom of the front page.

Please try and put recent artwork in all shows.

If you sell a piece of artwork at any of the shows, please have the buyer make the check out to the New Rochelle Art Association (or NRAA) for the full amount. The association keeps 10% commission, the library 10% and you will be issued a check for the remainder of the sale price.

LETTER FROM THE EDITOR

First, let me wish everyone a very happy and healthy New Year.

That said, I must apologize for the newsletter being late. I recently got a new computer and programs hoping to speed things up. Instead there were some program incompatibilities, so I had to recreate the newsletter from scratch. As always, please submit anything you would like to put into the newsletter on a timely basis. The newsletter is mailed every two months. We would all like to hear of your upcoming events, sales, etc. I can be reached by the methods of contact on the front page.

Lisa Post, Newsletter Designer and Editor

2008 YEARLY EVENTS CALENDAR

All shows will be held at the Lumen Winter Gallery at the New Rochelle Public Library. We are always looking for volunteers to help with the shows. Please remember all artwork **MUST** be framed, wired, clean, dry, and ready to hang. The work must be labeled properly. A late fee of \$5 will be charged by the Library for work not picked up on time. You must be on time and **CANNOT** pick up work before the official closing time of the show.

DERMOTT GALE AWARD SHOW- APRIL 5-26

Open to all members, with ribbons in all categories. Monetary prize for Dermott Gale Award (given to best 2D work) and Best of Show. You may enter 1- 3 pieces. No entry fee.

Drop off: Saturday, April 5, 10-1130am.

Pick up: Saturday, April 26, 10am-12pm.

New Member Jurying in: Saturday, April 12, 10am-1130am.

JULES BAUER AWARD SHOW- MAY 31-JUNE 21

Open to all members, with ribbons in all categories. Monetary prize for Jules Bauer Award (given to best watercolor) and Best of Show. You may enter 1-3 pieces. No entry fee.

Drop off: Saturday, May 31, 10-1130am.

Pick up: Saturday, June 21, 10am-12pm.

New Member Jurying in: Saturday, June 7, 10am-1130am.

93rd ANNUAL OPEN JURIED EXHIBITION- SEPTEMBER 20- OCTOBER 18

Open to members and non-members with ribbons, monetary prizes, certificates, and prizes in all categories. You must complete a prospectus to enter. You may enter 1-2 pieces. Small entry fee.

Drop off: Saturday, September 20, 10am-12pm.

Pick up: Declined sculpture and crafts, same day as pickup.

Declined artwork: Thursday, September 25, 5-7pm. (tentative)

Accepted artwork: Saturday, October 18, 10am-12pm.

Reception: Sunday, at the library (date to be announced).

New Member Jurying in: Saturday, September 27, 10am-1130am.

ADOLPH GRANT AWARD SHOW- DECEMBER 6-27

Open to all members with ribbons in all categories. Monetary prize for Adolph Grant Award (given to best work by a New Rochelle artist) and Best of Show.

Drop off: Saturday, December 6, 10-1130am.

Pick up: Saturday, December 27, 10am-12pm.

New Member Jurying in: Saturday, December 13, 10am-1130am.

NEW MEMBER JURYING INS- DATES LISTED ABOVE

Open to all artists wishing to apply for membership in the NRAA. Prospective members will be notified by mail of the judge's decision.

Drop off: All work must be dropped off on the Jurying In Saturday dates listed above for each show from 10-1130am.

Pick up: Artists must wait until the jurying is completed and pick up their artwork the same day as the drop off.